



Agrea Foundation

ENGAGING MORE YOUTH FOR AGRICULTURE AND FOOD SECURITY

AGREA FOUNDATION
CHRISTINE JODLOMAN



Cultivation of Human Beings

AGREA IS AN INNOVATIVE, inclusive, for-purpose, agri-business that is founded on sustainable agriculture, fair-trade, and replicable model of an agri-based economy. AGREA focuses on Filipino farmers and fisher folk.



Ecology of Dignity

With a strong belief in the Ecology of Dignity, AGREA is cultivating human beings in order to be agents of change for their families, communities, and country.

The producers of our food should not be 'just' farmers and fisher folk, but also educators, scientists, experts. They should be farmers and fisher folk who believe they could dream beyond themselves.

Agri-based Economy

AGREA implements community-based and organization-based programs supported by training and workshops for individuals that address Zero Waste, Zero Hunger, and Zero Insufficiency.

Our goal is to create island economies in the Philippines where value crops can be grown and where all players in the value chain are sustainably supported and nurtured.



Fair Trade

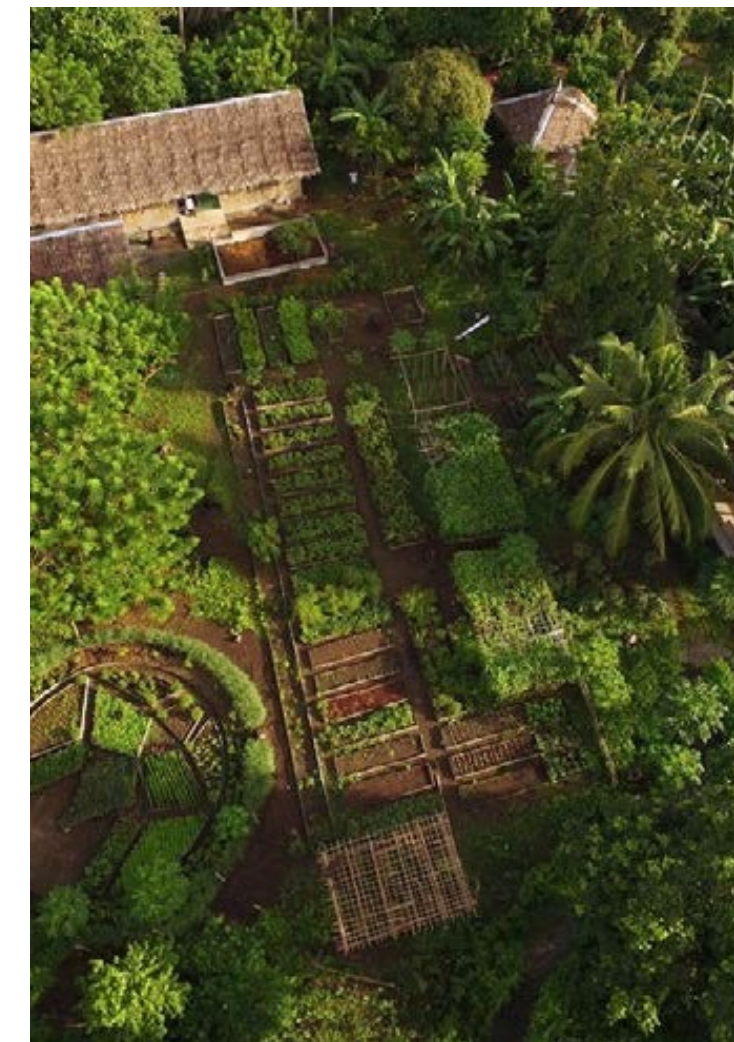
AGREA believes that the roles that Filipino farmers and fisher folk play are as important as any other stakeholder in the goods value chain.

AGREA believes that through technology, education and community empowerment, food producers can have a fairer business share, more autonomy, more dignity and a better quality of life.

Our History

OPERATING SINCE NOVEMBER 2014 in a patch of land in the Island Province of Marinduque, AGREA is registered with the Securities and Exchange Commission in June 19, 2015. In the years that followed, AGREA went on to become successfully accredited by various Philippine government agencies.

In 2016, the Department of Agriculture-Agricultural Training (DA-ATI) accredited AGREA Farm Estate in Marinduque as a Learning Site for Agriculture for its diversified integrated farming system. In 2017, the Technical Education and Skills Development Authority (TESDA) also certified AGREA Estate Farm as a farm school and an assessment center for agricultural technical vocation skills development. The following year, the Department of Tourism (DOT) recognized AGREA as an agri-tourism farm site.



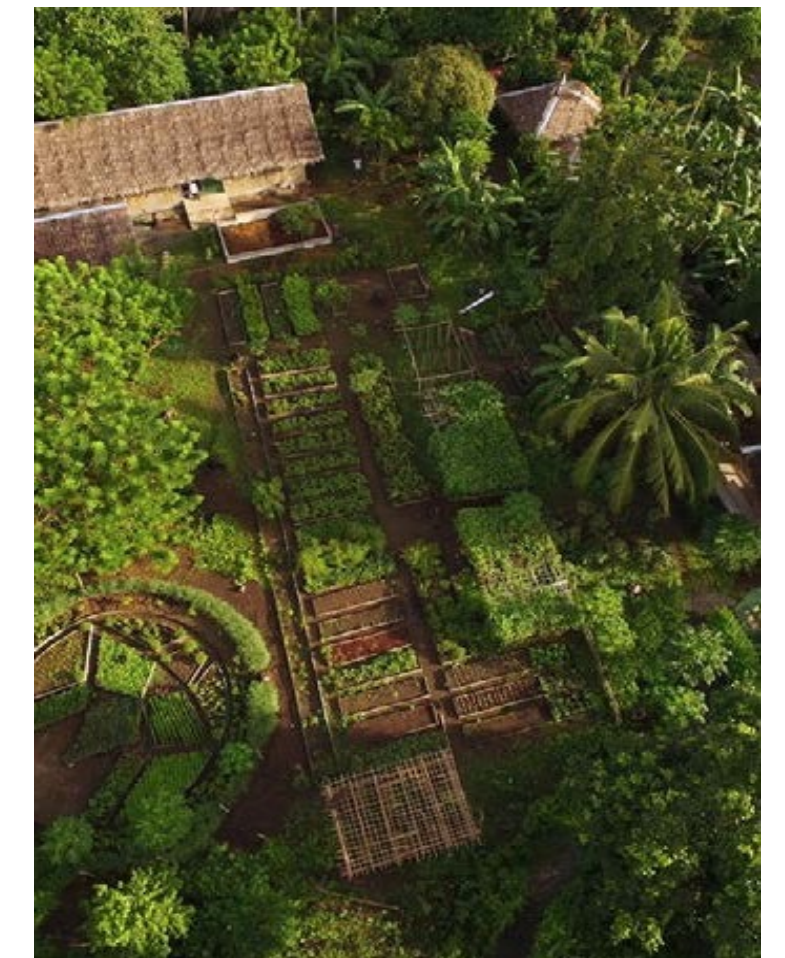
AGREA Model Farm

Opened in 2014 in the Amana Estate in Cawit, Boac, Marinduque, the AGREA Model Farm was and still is a diversified integrated farm for research, hands-on farming training, vermicomposting facility, and high-value crops production.



AGREA Farm Estate

AGREA Estate Farm is an integrated working farm a few yards from the model farm; this is AGREA's main office for farm operations and farmer-direct services. The AGREA Farm School and Assessment Center is also situated here.



AGREA Manila Office

Holding an address in the bustling city of Makati in Metro Manila, this AGREA office is both an operations hub for partnerships, administration and finance, programs development, and store for agricultural produce among others.

OUR VISION

To create the first
One Island Economy
model in the Philippines
by 2035

VISION

OUR GOALS

Zero Waste
Zero Hunger
Zero Insufficiency

MISSION

GOALS

OUR MISSION

To alleviate poverty and
hunger of farming and
fishing communities



ZERO WASTE

The environment is front and
foremost in all our strategies
and practices



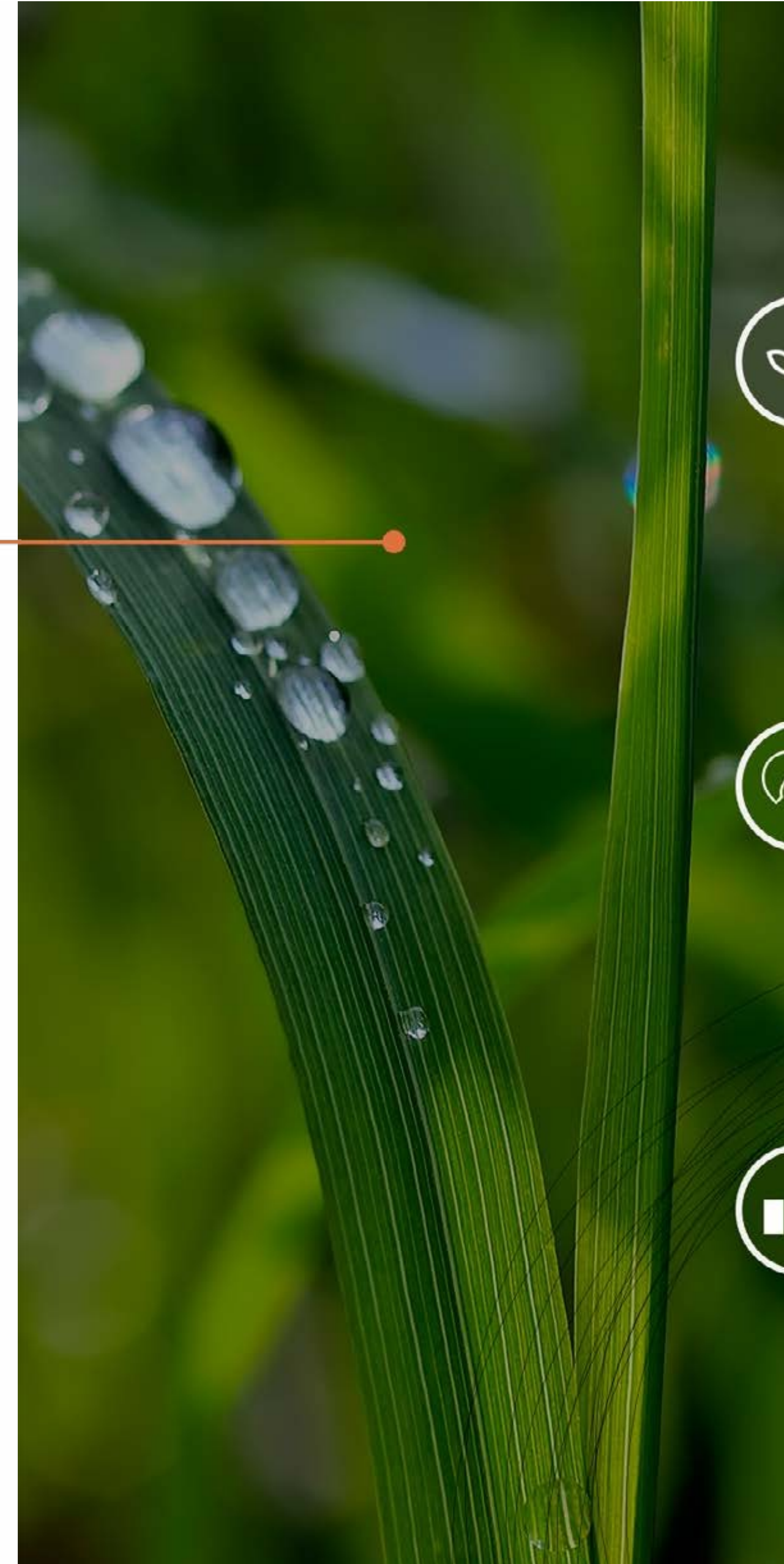
ZERO HUNGER

We believe in the potential
of the human spirit through
a thinking heart



ZERO INSUFFICIENCY

An economic development system
that is based on overall happiness



OUR PROGRAMS

Agriculture Education

Youth In Agriculture

Women In Agriculture

Food And Climate Change Adaptation And Mitigation

Nutrition Resilience



WHY YOUTH ENGAGEMENT MATTERS IN AGRICULTURE AND FOOD SECURITY?:

BRIEF SITUATIONER

Philippine Population

119,000,000

Filipinos who need to eat
everyday.



World Risk Index 2024

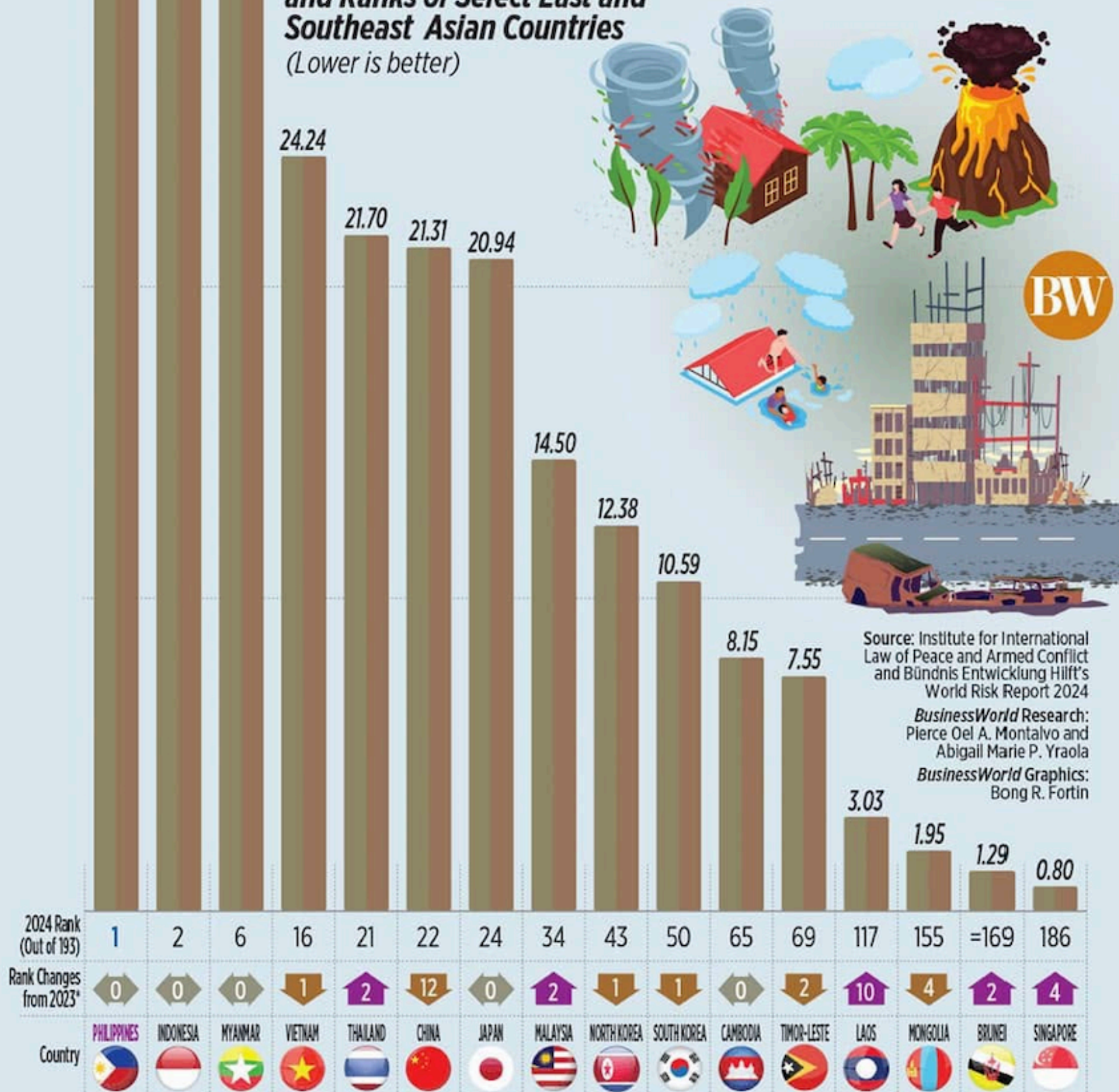
PHILIPPINES STILL THE MOST AT-RISK COUNTRY FOR 16TH STRAIGHT YEAR

The Philippines is the most at-risk country globally for 16 straight years, the latest edition of the World Risk Index (WRI) by the Institute for International Law of Peace and Armed Conflict and Bündnis Entwicklung Hilft (Alliance Development Works) showed. The report covers 193 United Nations member states based on 100 primary indicators and new methodology procedures that link to a country's exposure to natural disasters and societal capacity to respond. On a scale of 0 (very low risk) to 100 (very high risk), the Philippines' score worsened to 46.91 from 46.86 a year earlier, the highest among 193 countries in the report. Based on the longitudinal dataset (updated annually), the country has held the most at-risk spot since 2009.

Philippines' Historical Performance

Year	Rank (/193)	Score
2008	2	44.89
2009	1	45.48
2010	=1	45.53
2011	1	45.09
2012	1	46.89
2013	1	47.18
2014	1	47.17
2015	1	46.33
2016	1	46.50
2017	1	45.02
2018	1	45.29
2019	1	47.13
2020	1	46.89
2021	1	47.51
2022	1	46.68
2023	1	46.86
2024	1	46.91

2024 World Risk Index Scores and Ranks of Select East and Southeast Asian Countries (Lower is better)



Source: Institute for International Law of Peace and Armed Conflict and Bündnis Entwicklung Hilft's World Risk Report 2024
 BusinessWorld Research: Pierce Oel A. Montalvo and Abigail Marie P. Yraola
 BusinessWorld Graphics: Bong R. Fortin

Philippines' Profile (2024)

World Risk Index	46.91
Exposure	39.99
Vulnerability	55.03
Susceptibility	51.16
Lack of Coping Capacities	58.07
Lack of Adaptive Capacities	56.10

Notes:

*Up arrows denote deterioration in rankings, while down arrows show improvement. — The WRI is computed based on dimensions of exposure and vulnerability. The components of each dimension are as follows:
 1. Exposure — annual averaged population exposure to varying intensities of earthquakes, tsunamis, coastal floodings, riverine floodings, cyclones, droughts, and sea level rise.
 2. Vulnerability — includes susceptibility, lack of coping capacities, and lack of adaptive capacities as measured using dimensions of diversity influencing human vulnerability to natural disasters: social background, religion and worldview, ethnic background and nationality, sexual orientation, gender, physical and mental abilities, and age.

'Very High' Risk Countries

2024 Rank (Out of 193)	Country	Rank Changes from 2023*	2024 Score (Out of 100)
1	Philippines	0	46.91
2	Indonesia	0	41.13
3	India	0	40.96
4	Colombia	1	37.81
5	Mexico	1	35.93




'Very Low' Risk Countries

2024 Rank (Out of 193)	Country	Rank Changes from 2023*	2024 Score (Out of 100)
193	Monaco	1	0.18
192	Andorra	1	0.28
191	San Marino	0	0.35
190	Luxembourg	1	0.61
189	São Tomé and Príncipe	1	0.67

From: World Risk Index

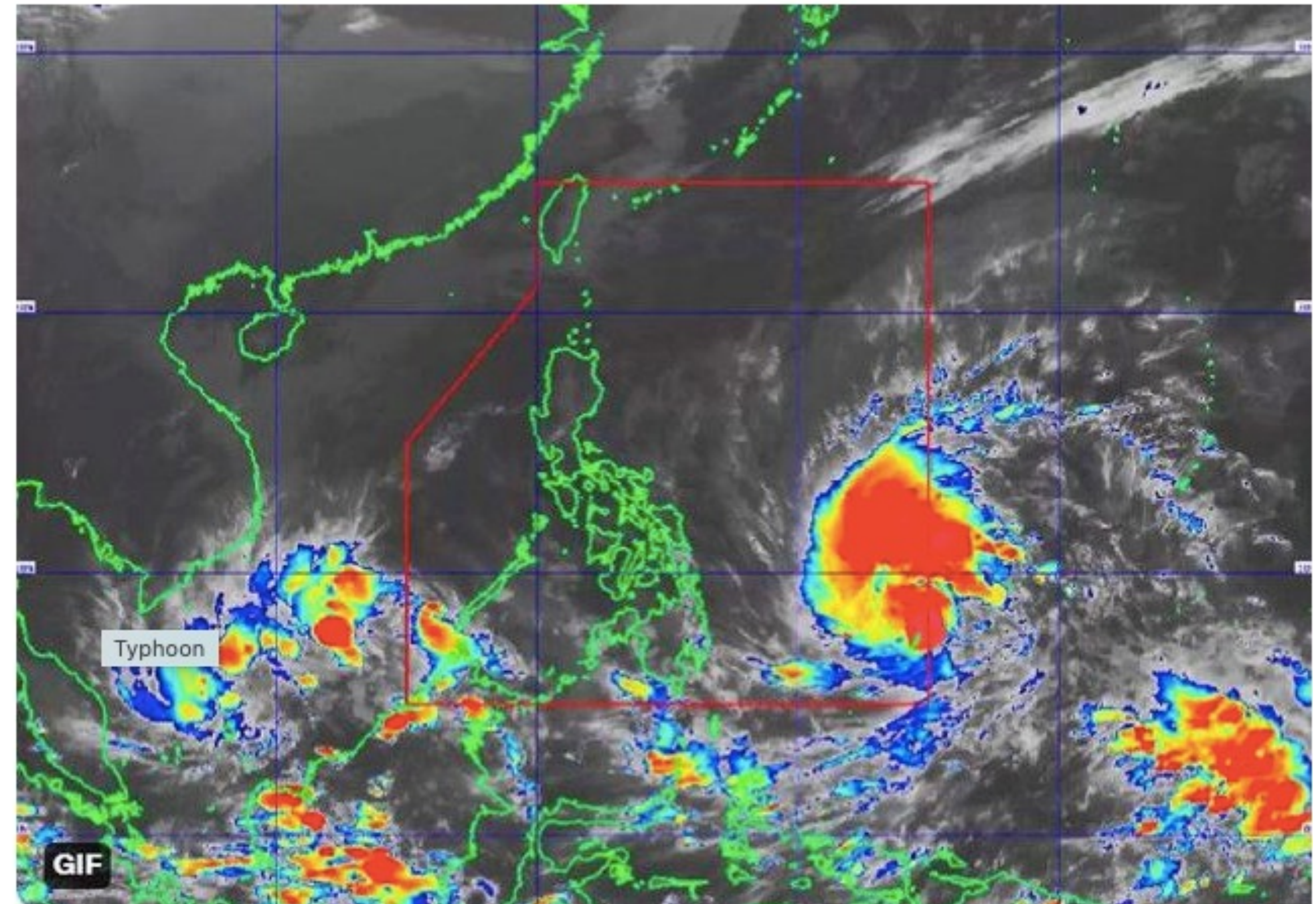
El Niño damage to agriculture now at P7.96 billion – DA

APR 26, 2019 3:49 PM PHT
ANNA GABRIELA A. MOGATO

 The Department of Agriculture says 247,610 farmers and fisherfolk are affected by El Niño as of April 25





PHP 8.4 Billion damage in agriculture by Typhoon Odette



THE ESTIMATE of damage to agriculture done by Typhoon Odette (international name: Rai) has risen to P8.4 billion, the Department of Agriculture (DA) said.

The DA estimated the lost production at 175,720 metric tons, with 125,161 farmers and fishermen affected across 347,072 hectares.

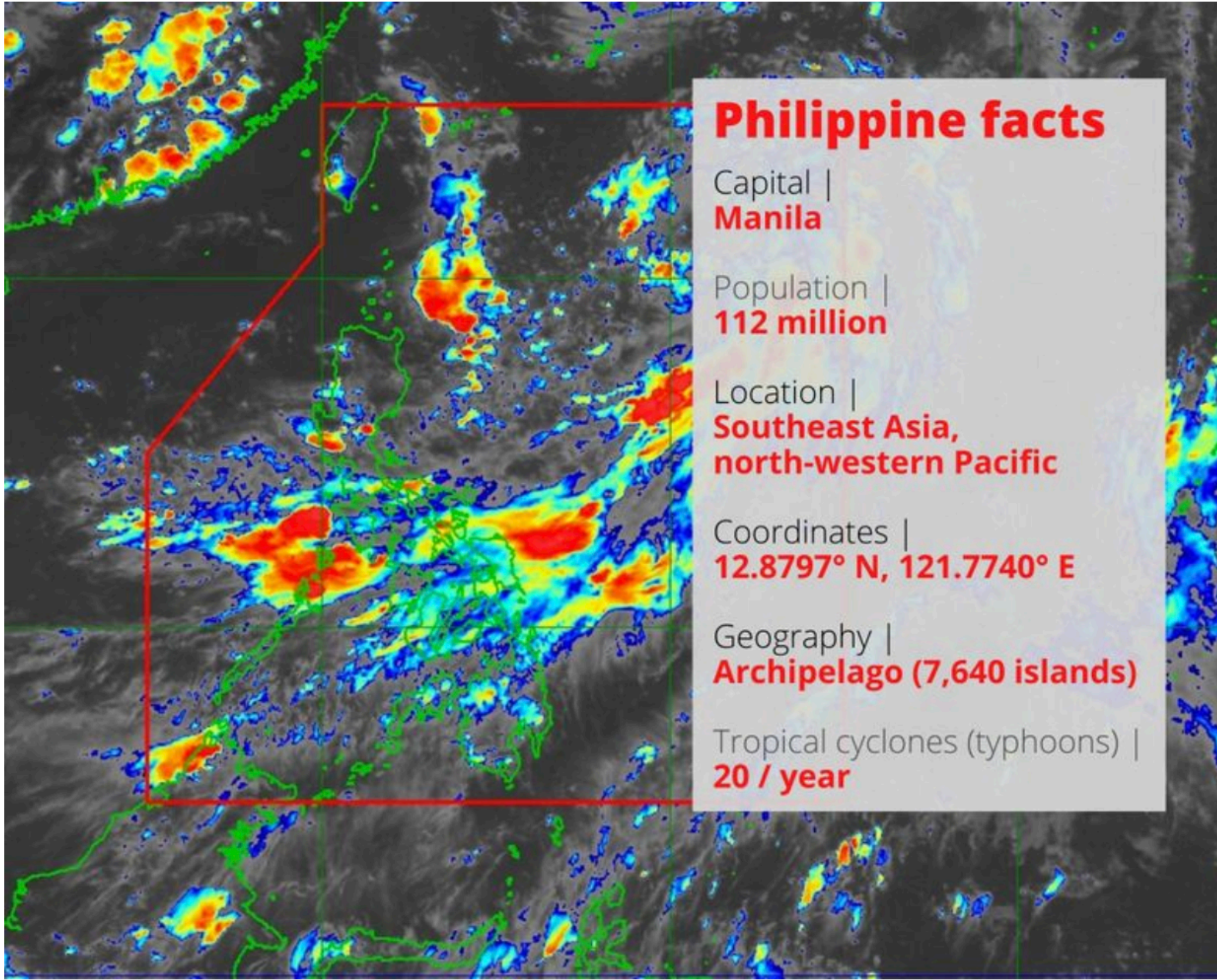


Image Credit:

A major part of the Philippines is straddles this “belt”. Due to its geographic location, an average of 20 typhoons can hit the country a year.

GMA NEWS ONLINE
YOUR NEWS AUTHORITY

Enteng causes P12M worth of agricultural damage in Naga

By GMA Integrated News
Published September 3, 2024 7:47pm



The onslaught of tropical cyclone “Enteng”, which has now intensified to a severe tropical storm, has so far caused P12 million worth of damages to the agricultural sector in Naga City, Camarines Sur.

Agriculture damage due to Enteng rises to P659 million

Bella Cariaso - The Philippine Star
September 7, 2024 | 12:00am



Several houses in Barangay Lias and Barangay Saog are submerged in floodwaters following the heavy rain brought by Severe Tropical Storm #EntengPH in Marilao, Bulacan on September 4, 2024.
STAR / Michael Varcas

HEADLINES

Agriculture losses due to El Niño reach P9.5 billion

Philstar.com
May 21, 2024 | 5:46pm



A farmer checks a portion of a dried rice field along Pullilan-Baliuag Bypass Road in Bulacan on February 26, 2024.
STAR / Michael Varcas

57 Y/O |

FARMERS ARE AGEING.

- LEAVING THE COUNTRYSIDE
- DECREASE IN ENROLLMENT ON AGRI-COURSES
- SEEN AS CHALLENGING AND NOT PROFITABLE SECTOR

FILIPINO YOUTH HAS LITTLE TO NO INTEREST IN AGRICULTURE.



**WHY YOUTH ENGAGEMENT MATTERS IN
AGRICULTURE AND FOOD SECURITY?:**

**THE FUTURE OF AGRICULTURE AND FOOD
SECURITY IS THE YOUTH OF TODAY.**

Empowering Young People in Agriculture





AGREA

FARM SCHOOL

always growing. always discovering.



INTENTIONAL INCLUSION OF YOUNG PEOPLE IN AGRICULTURE EDUCATION

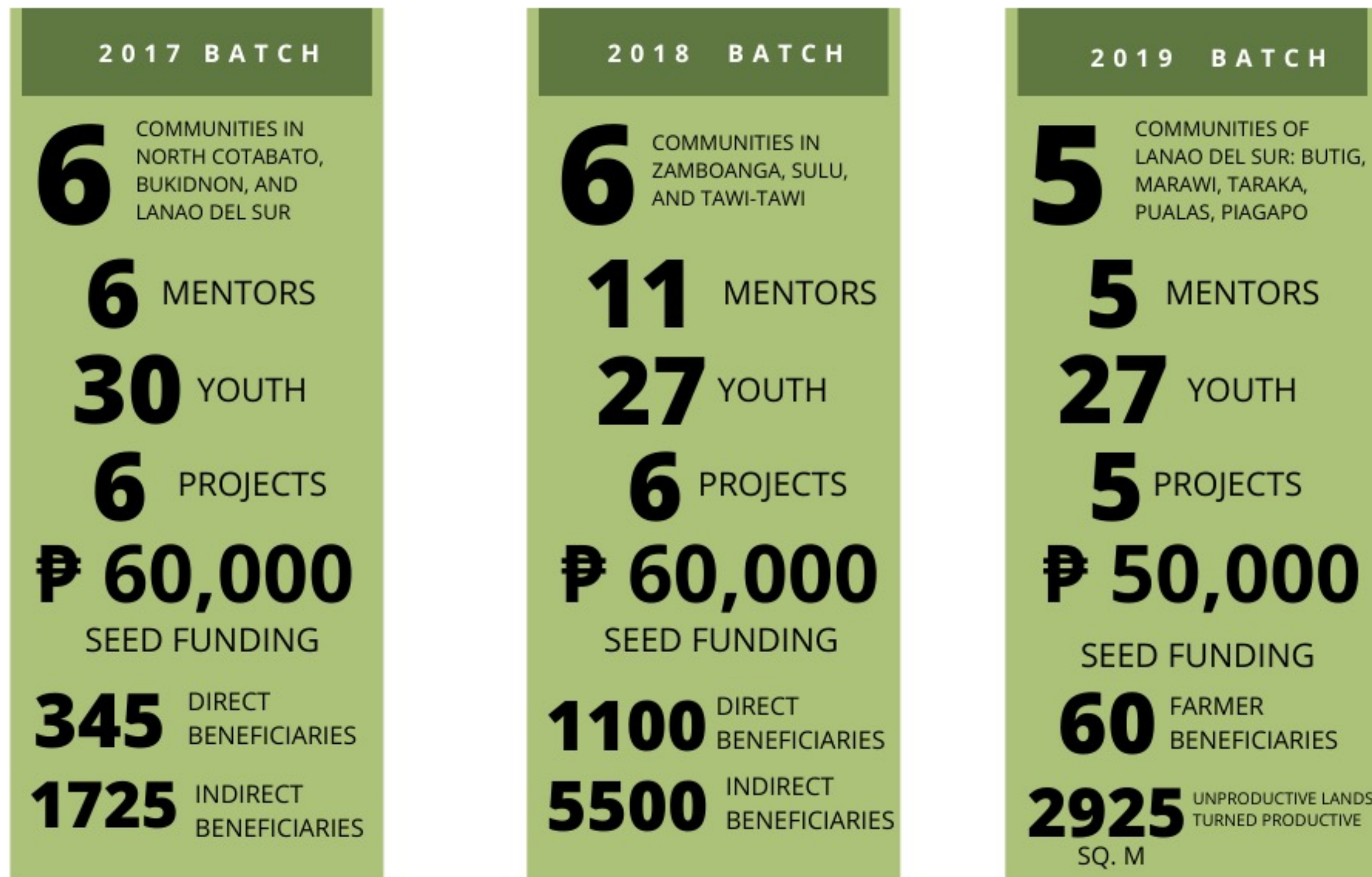


- **3,000 GRADUATES**
- **54% OF GRADUATES ARE YOUTH**
- **PARTNERSHIPS WITH YOUTH GROUPS**
- **ENABLING AN ECOSYSTEM OF LOCAL CHAMPIONS/ INFLUENCERS**

COMMUNITY-BASED YOUTH PROGRAMS



YSEALI Grow is an innovative program that empowers emerging young leaders in war-torn areas in Mindanao to build their dreams, and improve their communities' standards of living, through leadership and agripreneurship. With three implementations of YSEALI the program was able to provide Mindanao youth leaders with support, leadership, and empowerment, and the necessary tools to launch an agripreneurship project. Moreover, it leverages the expertise of Filipino United States Government Alumni (USG) alumni in agriculture, development, interfaith dialogue, Muslim culture, and indigenous peoples.



YLAW offers week-long training on dream-building, leadership development, values formation, technical training for sustainable agriculture, agribusiness, and mentoring sessions with leaders in the food and agribusiness sector for young leaders.

THE IMPORTANCE OF RECOGNITION AND ROLE MODELS

Headlines of ageing farmers and struggling fisherfolk often dominate the news, but AGREA wants to spread a message of hope: young Filipinos making farming and fishing cool, smart, sexy, and humane do exist, and their stories have the potential to motivate millions of other Filipino youth to follow suit.

*The inaugural **Young Agri-Laureate Awards (YALA)** will recognize the Philippines' most outstanding youth representing or working in the service of farmers and fisherfolk. For their exceptional practice in agriculture and fisheries, AGREA will present awards to **five (5) Filipino individuals between the ages of 18-30** and provide them a platform to invite others in advancing Philippine agriculture:*



**AGREA
AGRI-LAUREATE
AWARDS**



Leave no one
behind by
bringing
everyone
forward.

agreafoundation@agrea.ph
christinejodloman@agrea.ph
+639171132286